



What I should already know: How to use the mouse and keyboard, understanding what a computer is and using applications, the journey files take.

What will I learn?

1. Can we recognise basic inputs and outputs?
2. Can we decompose a laptop?
3. Can we understand the purpose of computer parts?
4. Can we understand the purpose of computer parts?
5. Can we decompose a tablet computer?

Key Vocabulary

Algorithm - A sequence of instructions.
Assemble - To put together.
CPU (Central Processing Unit) - The brain of a computer that deals with all the data it receives from input and output devices.
Data - Information used for a specific purpose.
Decompose - To break something down into smaller parts.
Desktop - A tower computer that needs a mouse, keyboard and monitor and it remains in one place.
Disassemble - To take apart.
GPU (Graphics Processing Unit) - A piece of hardware that is used to help generate 2D and 3D images for programs such as games.
Hard Drive - A
HDD (Hard Disk Drive) - An internal or external device that can store information such as files, documents images and programs.
Infinite Loop - A sequence of instructions that loops around forever.
Input - When information enters a system.
Laptop - A computer that is portable and can be used when travelling.
Memory - A computer memory stores information ready for use.
Microphone - An audio input device.
Monitor - An output device that displays information (a screen).
Output - When information leaves a system.
Program - A sequence of instructions to tell the computer to perform.
QR Code - Quick Response code presented in a similar way to a barcode. When scanned, it takes you to a specific website.
RAM (Random Access Memory) - A piece of hardware that allows data to be recalled or stored within a computer.
ROM (Read Only Memory) - Information stored that can only be read and not edited.

Key Skills (National Curriculum)

Pupils will be taught (KS1/KS2):

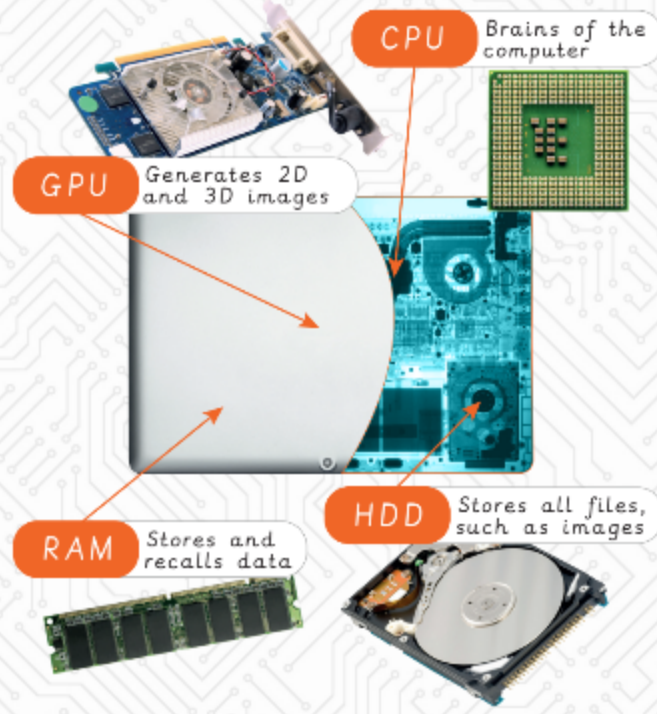
- 1) Recognise common uses of information technology beyond school.
- 2) Understand computer networks including the internet; how they can provide multiple services, such as the world-wide web; and the opportunities they offer for communication and collaboration.

Storage - A limited amount of space which is where files can be kept.

Tablet Device - A handheld computer that consists of a touchscreen, operating system and a rechargeable battery.

Trackpad - An input device usually found in laptops. It is used to move the cursor with the touch of your finger.

Computer parts inside of a laptop:



Links to other areas of the curriculum :